

# SOONER SURVEY



*A PUBLICATION OF COLE HARGRAVE SNODGRASS & ASSOCIATES*

VOLUME 17 - NUMBER 4B - SPECIAL EDITION

MAY 2007



## *Republican Presidential Primary Wide Open in Oklahoma*

With support from 27% of registered voters, John McCain currently leads the field in Oklahoma. The recent survey of 300 Registered Republican Voters in Oklahoma, conducted as part of the Cole Hargrave Snodgrass & Associates' *Sooner Survey*, reveals that McCain holds a lead while only two other prospects, former Mayor of New York City, Rudy Giuliani (17%) and unannounced candidate former Senator Fred Thompson (12%), are in double-digits. Massachusetts Governor Mitt Romney, who recently canceled an appearance at the State Republican Party Convention, was among a second tier of candidates in the single-digits, including Arkansas Governor Mike Huckabee (5%), Kansas Senator Sam Brownback (2%), California Congressman Duncan Hunter (1%) and former Wisconsin Governor Tommy Thompson (1%).

It should be noted that Giuliani suffers in the Sooner State among the more conservative elements that tend to participate in primaries. For example, 24% of the Republican primary electorate describes itself as being "evangelical Christians." Among this critical voting bloc, Giuliani is a distant third (McCain 30% vs. Fred Thompson 21% vs. Giuliani 10%). Similarly, among the 33% of Republicans that say pro-life issue is of top importance, Giuliani only has support of 8%, while McCain (33%) and Fred Thompson (17%) improve their showing.

Fred Thompson's potential in the Sooner State is best exemplified by how well he does among those with an actual history of voting. Among the 28% of Republicans that have voted in at least 4 of the last 5 statewide primary elections, Thompson actually leads (24% Fred Thompson vs. 18% Giuliani vs. 17% McCain). ♦

*-Pat McFerron*

*This edition of the Sooner Survey was taken between April 23rd and 26th, 2007. It was a telephone survey of 300 registered voters in each party in the State of Oklahoma. The sample accurately reflects the Oklahoma electorate. The confidence interval associated with a sample of this type is such that 95% of the time, the results are within +/-5.6% of the "true values," where "true values" refer to the results obtained if it were possible to interview every voter in the state.*

## *Hillary Clinton Leads Among Democrats where Edwards, not Obama, is Top Rival*



New York Senator Hillary Clinton currently commands support from 29% of the state's Democrats, while John Edwards is well within striking distance at 20% and Illinois Senator Barack Obama is in third at 15%. New Mexico Governor Bill Richardson currently places a distant fourth at 7%; no other candidate exceeds 1%.

Interestingly, the group at 1% includes the 2004 Oklahoma Democrat Presidential Primary winner, General Wesley Clark.

A clear ideological divide among state Democrats is evident in their choice for President. Among the 12% who always vote pro-choice, Clinton (21%) and Obama (28%) are the clear favorites, while John Edwards trails badly (6%). In contrast, Edwards wins among the 15% who always vote pro-life (17% Clinton vs. 17% Obama vs. 22% Edwards). Fully 29% of the Democrat electorate in Oklahoma describe themselves as liberals, and this group is solidly behind Senator Clinton (40% Clinton vs. 19% Obama vs. 16% Edwards); however the 22% who say they are "strong conservatives", opt for Edwards (20% Clinton vs. 8% Obama vs. 22% Edwards) and Obama sees his numbers plummet.

Among the 19% of Democrats who have voted in each of the last five statewide primaries, the race is a three-way dead heat (21% Clinton vs. 21% Obama vs. 22% Edwards). Clearly, this race is as wide open as western parts of the state. ♦

*-Pat McFerron*

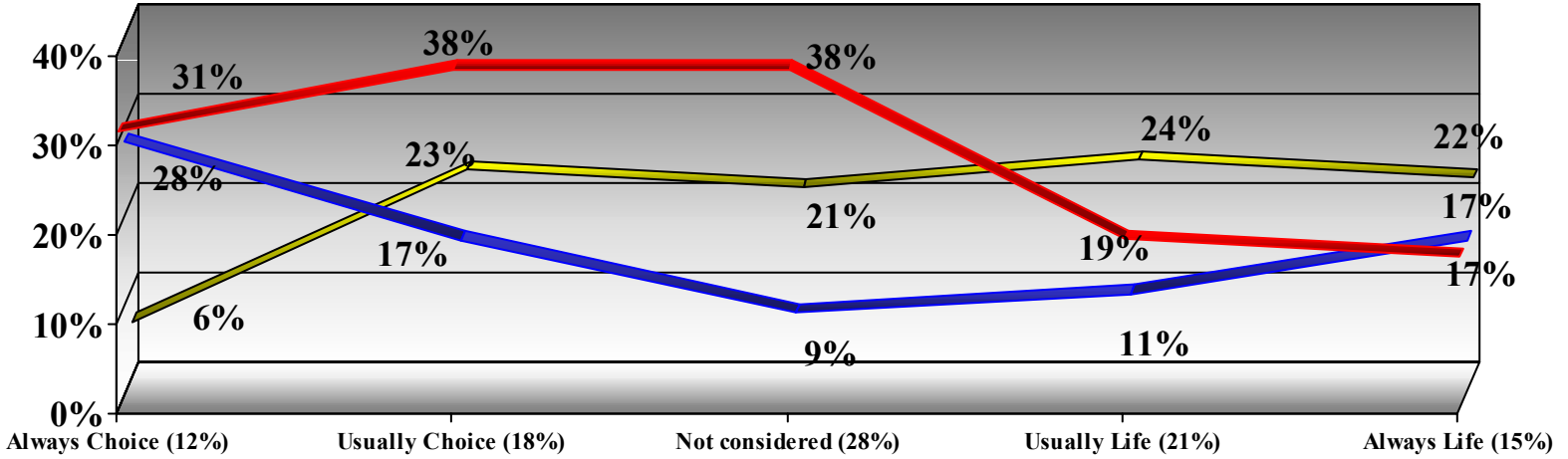
**Pat McFerron is a nationally recognized pollster who has been with Cole Hargrave Snodgrass & Associates since 1993. He has supervised polling numbers for numerous successful gubernatorial, U.S. Senate, Congressional and legislative clients throughout the nation. In addition, McFerron conducted polling for Oklahoma's Right-to-Work campaign, Oklahoma City's MAPS for Kids, Tulsa's Vision 2025, Fortune 500 companies, and many local and legislative campaigns.**



MAY 2007

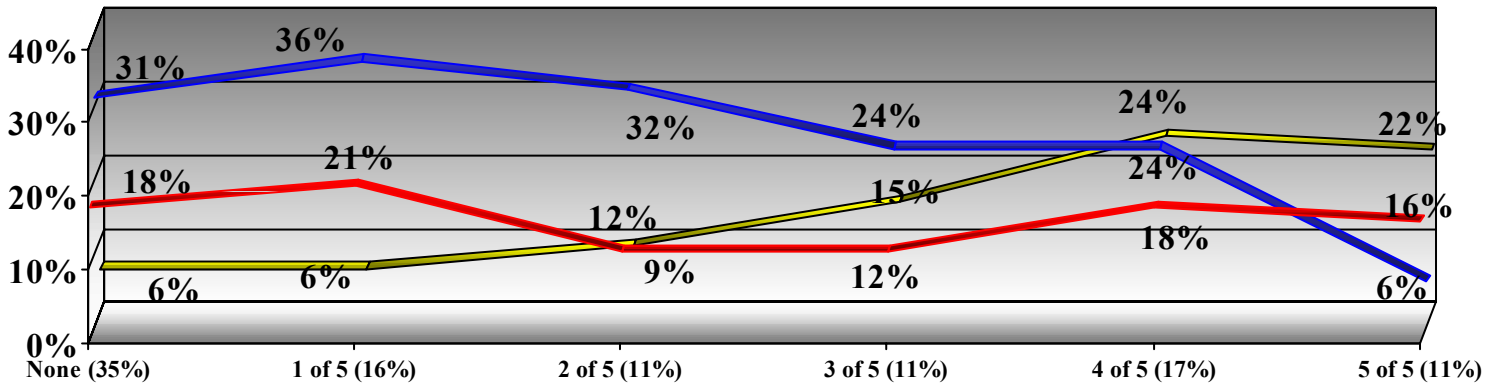
## Democrat Primary by Voter's Abortion Stance

■ Clinton ■ Obama ■ Edwards



## GOP Primary by Primary Vote History

■ Giuliani ■ McCain ■ F. Thompson



1. (Republicans only) If the Republican primary election for President were held today, for whom would you vote if the candidates were: (Rotate)

Rudy Giuliani	17%
John McCain	27%
Mitt Romney	7%
Sam Brownback	2%
Fred Thompson	12%
Mike Huckabee	5%
Duncan Hunter	1%
Tom Tancredo	0%
Tommy Thompson	1%
Undecided (vol.)	28%

2. (Democrats only) If the Democrat primary election for President were held today, for whom would you vote if the candidates were: (Rotate)

Hillary Rodham Clinton	29%
Barack Obama	15%
John Edwards	20%
Joe Biden	1%
Wesley Clark	1%
Christopher Dodd	-
Dennis Kucinich	1%
Bill Richardson	7%
Al Sharpton	-
Undecided (vol.)	27%